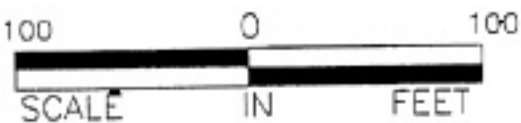
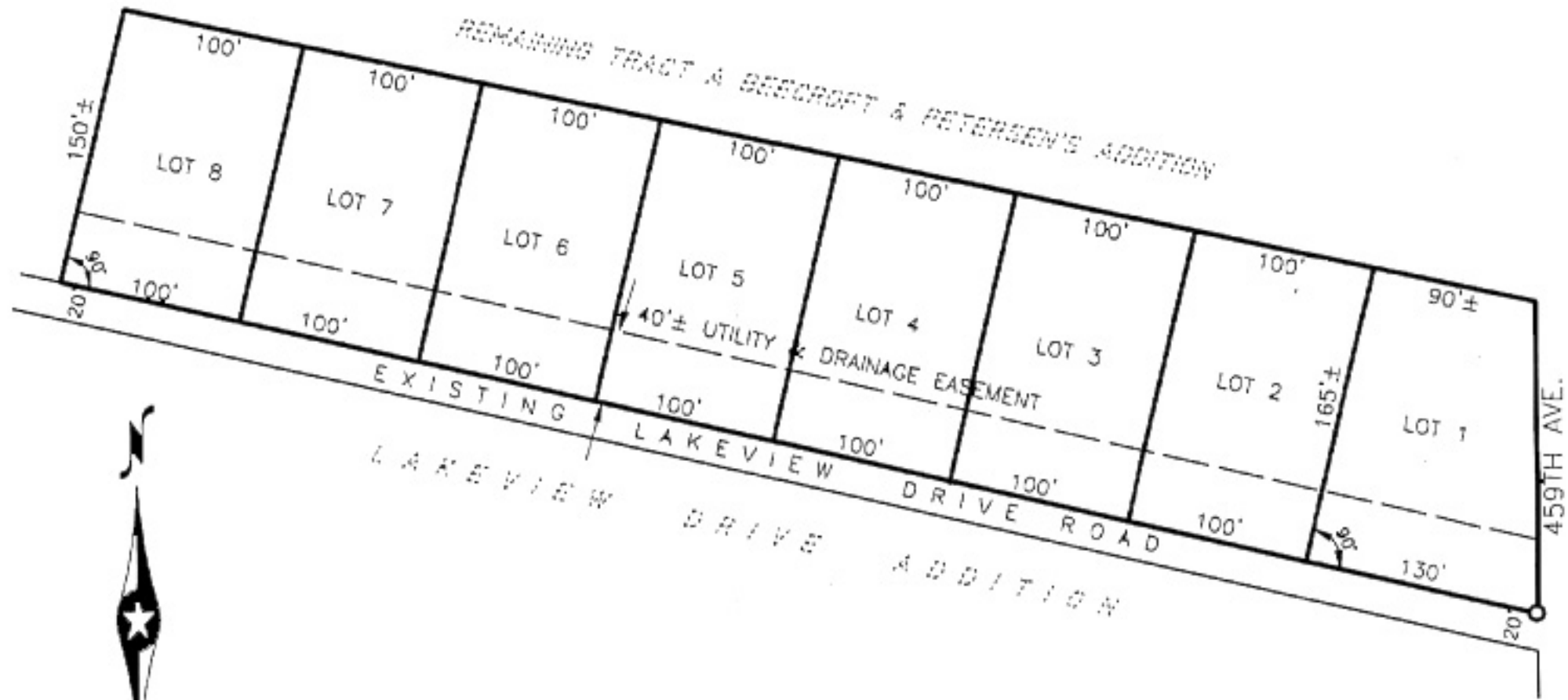


PRELIMINARY PLAT (DRAFT)
OF THE
HIDDEN VALLEY ESTATES DEVELOPMENT
NE1/4 SECTION 23, T106N, R52W, 5TH P.M.
LAKE COUNTY, SOUTH DAKOTA
(PART OF TRACT A OF BEECROFT & PETERSEN'S ADDITION)



DEVELOPERS: ROD & CHERYL GOEMAN
JANUARY, 2008

Drawing: 10526